



While the Albany Pine Bush Preserve provides a special habitat for many plants and animals, it also provides visitors with a variety of non-motorized recreational opportunities including hiking, jogging, nature study, cross-country skiing, horseback riding, mountain biking, and hunting.

The preserve contains approximately 20 miles of officially marked, multiple-use trails which are briefly described inside this guide. Most trails are considered easy to moderate and vary from wide open sandy trails to narrow grassy woodland paths. The topography is generally flat with gradual slopes up and down the dunes.

All unmarked paths and firebreaks are closed to recreational use and are not shown on this map. Also, please respect the private property that borders many preserve lands.

PRESERVE RULES AND REGULATIONS

In order to protect the natural beauty and ecology of the preserve and assure that all visitors have a safe and enjoyable visit, please observe the following rules. Complete preserve rules and regulations are available at AlbanyPineBush.org.

1. Bicycling and horseback riding are only allowed on officially marked trails.
2. Off-trail "bushwhacking" is permitted on foot, but use of unmarked "social" paths, closed trails, and firebreaks is prohibited.

hunting, trapping and fishing seasons and in accordance with New York State laws and additional preserve regulations available at AlbanyPineBush.org.

FOR YOUR SAFETY

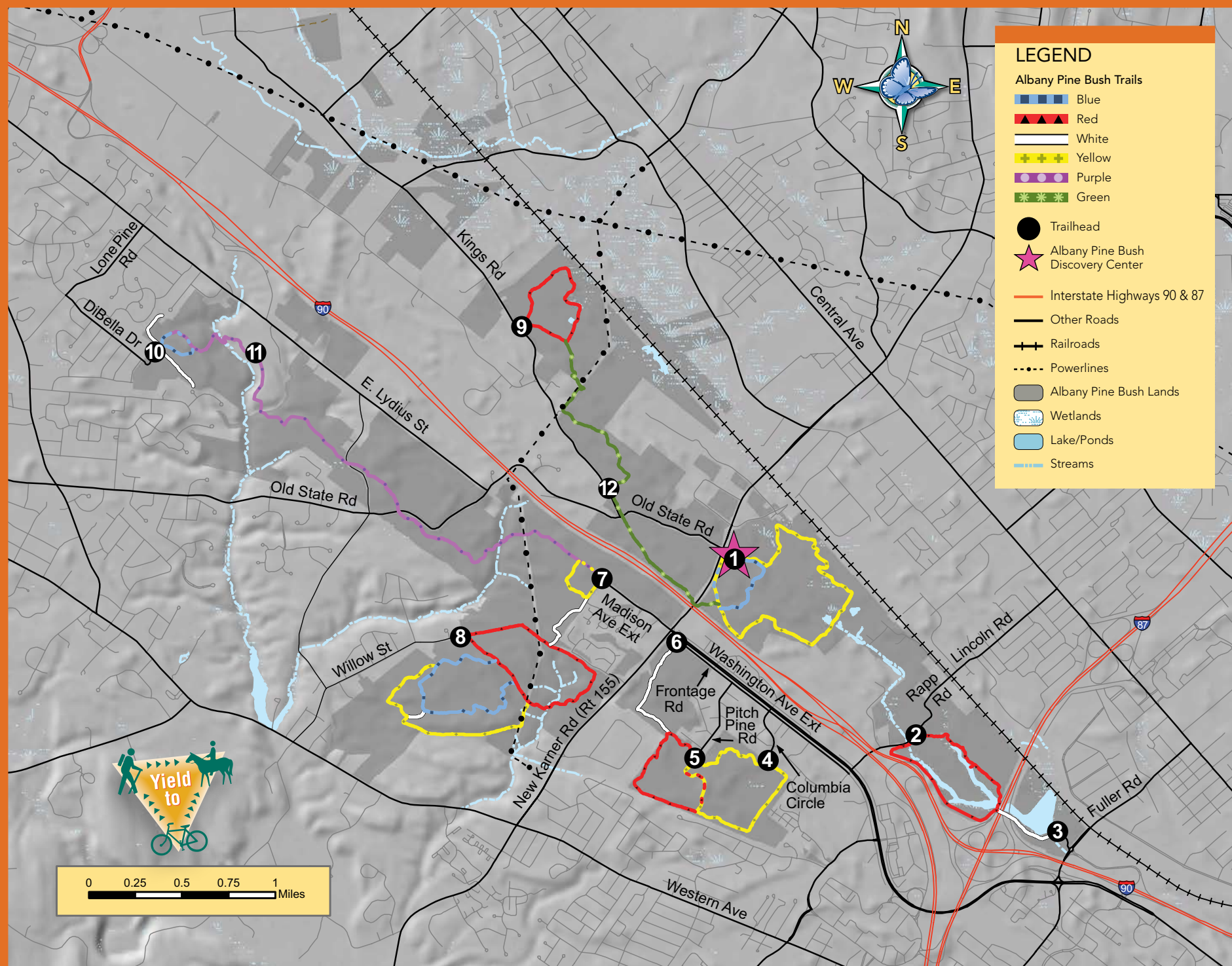
Deer Ticks – Although most common from April through November, deer ticks can be active anytime of the year. Please take proper precautions to prevent tick bites and check yourself thoroughly for ticks after visiting the preserve.

Weather – Visitors should be prepared for abrupt weather changes and extremes in temperature. Summers can be especially hot in the open barrens with temperatures exceeding 100°F and winters can be quite cold.

Emergencies – In an emergency dial 911. To report non-emergency situations please contact the Albany Pine Bush Preserve Commission at (518) 456-0655. To report a violation, contact the NYS-DEC rangers at (518) 408-5850.

Temporary area closure – Various areas of the preserve may be temporarily closed throughout the year while prescribed burning, mowing or other management activities are occurring. For your safety, please obey all signage at trailheads and along trails. Current closure information can be found at AlbanyPineBush.org, or at the Discovery Center.

3. Pets must be restrained at all times by an adequate collar or harness and leash and must be kept under complete control. Pet owners need not bag and pack out pet waste, but must simply remove pet feces from the trail.
4. Preserve visitors may not collect, deface, injure or remove any plant, animal, sand or other living or non-living feature from the preserve.
5. Research projects proposed for the preserve must be submitted in writing and approved by the Commission before project initiation.
6. Motor vehicles of any kind including ATV's, snowmobiles and motorcycles are prohibited on preserve lands and waters. Motor vehicles used by those with mobility impairments are allowed by permit only.
7. Groups of 25 or more visitors must notify the Albany Pine Bush Preserve Commission at least five days before visiting the preserve, and must obtain a permit.
8. Hunting, trapping and fishing are allowed during times designated as New York State's open



ACCESSING INTERESTING PLACES IN THE ALBANY PINE BUSH PRESERVE

REVISED 3/2018

- 1. Karner Barrens:** Starting at the Albany Pine Bush Discovery Center, several miles of trails meander through the dunes and some of the best pitch pine-scrub oak barrens that exist in the preserve. The green "through trail" connecting to Truax Trail Barrens and beyond begins here. *Discovery Trail – 0.2 miles, Blue Trail – 0.9 miles, Yellow Trail – 2.6 miles, Green Trail – 2.1 miles*
- 2. Rapp Barrens:** Trails meander through mature oak savannahs, parallel the steep shoreline of Rensselaer Lake, cut through pitch pine-scrub oak barrens and forests, and run adjacent to recent habitat restoration areas. *Red Trail – 1.7 miles*
- 3. Six Mile Waterworks:** This area provides developed picnic grounds with tables and grills, a pavilion available for rental (through the Albany City Clerk, 434-5090), a playground, restrooms, and shoreline docks to facilitate fishing. *White Trail – 0.5 miles*
- 4. Blueberry Hill East:** One of the most intensively restored areas of the preserve, variously aged native prairies are intermixed with small remnant pitch pine-scrub oak barrens. *Yellow Trail – 1.7 miles*

- 5. Blueberry Hill West:** Remnant patches of pitch pine-scrub oak barrens are interspersed with restored native prairies throughout this region. Dune top views provides beautiful vistas to the south and west. *Red Trail – 1.4 miles*
- 6. Kaikout Kill Barrens:** The trail crosses dense pitch pine-oak forests, pitch pine-scrub oak barrens, and native prairie habitats. This region of the preserve showcases rolling sand dunes and is adjacent to a large, steep portion of the Kaikout Kill ravine. *White Trail – 0.7 miles*
- 7. Madison Avenue Pinelands:** Dense forests of pitch pine trees were recently thinned here, changing the habitat to more closely resemble the globally rare, wide open pitch pine-scrub oak barrens more typical throughout the area. Wide sandy trails provide an easy hike or ski. *Yellow Trail – 0.6 miles, White Trail – 0.4 miles, Purple Trail – 3.7 miles*
- 8. Great Dune:** Diverse forest communities, pitch pine-scrub oak barrens, and native prairies adorn rolling sand dunes including the Great Dune that is over one mile long and as much as 75 feet tall. *Red Trail – 1.8 miles, Blue Trail – 1.4 miles, Yellow Trail – 1.3 miles*

- 9. Kings Highway Barrens:** A loop trail lets visitors enjoy both native pitch pine-oak forests and highly invasive black locust forests as well as the native prairies found in this region. *Red Trail – 1.2 miles, Green Trail – 2.1 miles*
- 10. Hunger Kill Barrens:** Portions of this trail have been highly disturbed in anticipation of development, while other areas offer closed canopy forests of towering white pines, and riparian ravines adorned with eastern hemlock. *Blue Trail – 0.5 miles, White Trail – 0.5 miles, Purple Trail – 3.7 miles*
- 11. DiCaprio Park:** This trailhead is located within the Town of Guilderland's DiCaprio Park. The purple through trail crosses a wide diversity of habitats and terrain including flat manicured lawn, deep moist ravines with steep topography, invasive black locust forests, and rolling pitch pine-oak forests and pitch pine-scrub oak barrens. *Purple Trail – 3.7 miles*
- 12. Truax Trail Barrens:** The green trail follows portions of the historic "King's Highway" an early thoroughfare between Albany and Schenectady, NY. It passes through pitch pine-oak forest and pitch pine-scrub oak barrens as it connects Karner Barrens trailhead to the Kings Highway Barrens trailhead. *Green Trail – 2.1 miles*



- As the gateway to the Pine Bush, the Discovery Center introduces you to everything that makes the preserve rare, significant & distinct.
- A one-of-a-kind interpretive center with interactive exhibits and a fully accessible outdoor Discovery Trail featuring local artwork, green technology and demonstration gardens.
- Indoor and outdoor classrooms where learning comes alive for schools and special interest groups.
- Our expert educators, scientists and stewards offer a variety of natural, historical and cultural programs.

Albany Pine Bush Preserve Commission
195 New Karner Road, Albany, NY 12205
AlbanyPineBush.org

DIRECTIONS TO THE ALBANY PINE BUSH PRESERVE DISCOVERY CENTER

Central to the Capital District of New York State, the Albany Pine Bush Preserve is easy to access from both I-87 and I-90. The directions below will get you started at the Albany Pine Bush Discovery Center, the preserve's headquarters and flagship interpretive center which is free and open to the public during the week from 9-4, and on weekends from 10-4.

From I-90: Take I-90 East or West to I-87 (Northway) North and follow directions for I-87.

From I-87 North or South: Take I-87 to Exit 2W (Route 5 West). Travel west approximately 2 miles and turn left at the light onto Route 155 South (New Karner Road). Travel approximately 1 mile to the second light. Turn left at the light into the Discovery Center parking lot.

WHAT TO BRING DURING YOUR VISIT

- Water
- Trail map
- Rain gear
- Sunglasses and sunscreen
- Day pack
- Comfortable hiking boots
- Snack foods
- Trail map
- Camera or smartphone
- Insect repellent

The Following are Prohibited in the Preserve

- Motorized vehicles
- Littering/dumping
- Campfires
- Camping
- Feeding wildlife
- Travel on firebreaks