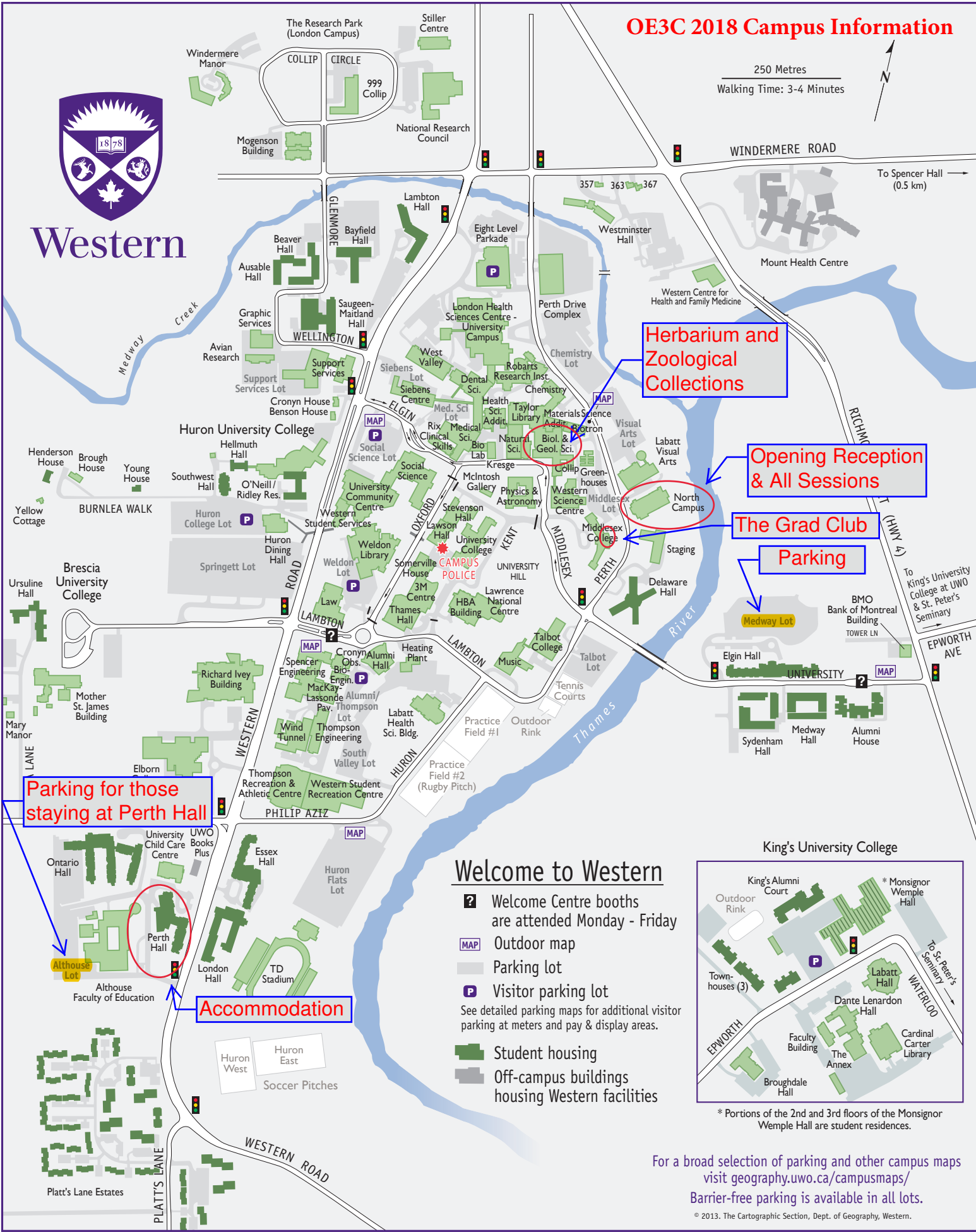
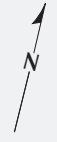


OE3C 2018 Campus Information



250 Metres
Walking Time: 3-4 Minutes



Herbarium and Zoological Collections

Opening Reception & All Sessions

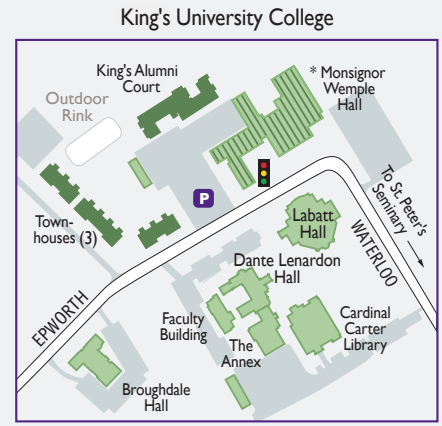
**The Grad Club
Parking**

Parking for those staying at Perth Hall

Accommodation

Welcome to Western

- 2** Welcome Centre booths are attended Monday - Friday
- MAP** Outdoor map
- P** Parking lot
- P** Visitor parking lot
- See detailed parking maps for additional visitor parking at meters and pay & display areas.
- Student housing
- Off-campus buildings housing Western facilities



* Portions of the 2nd and 3rd floors of the Monsignor Wemple Hall are student residences.

For a broad selection of parking and other campus maps visit geography.uwo.ca/campusmaps/
Barrier-free parking is available in all lots.