



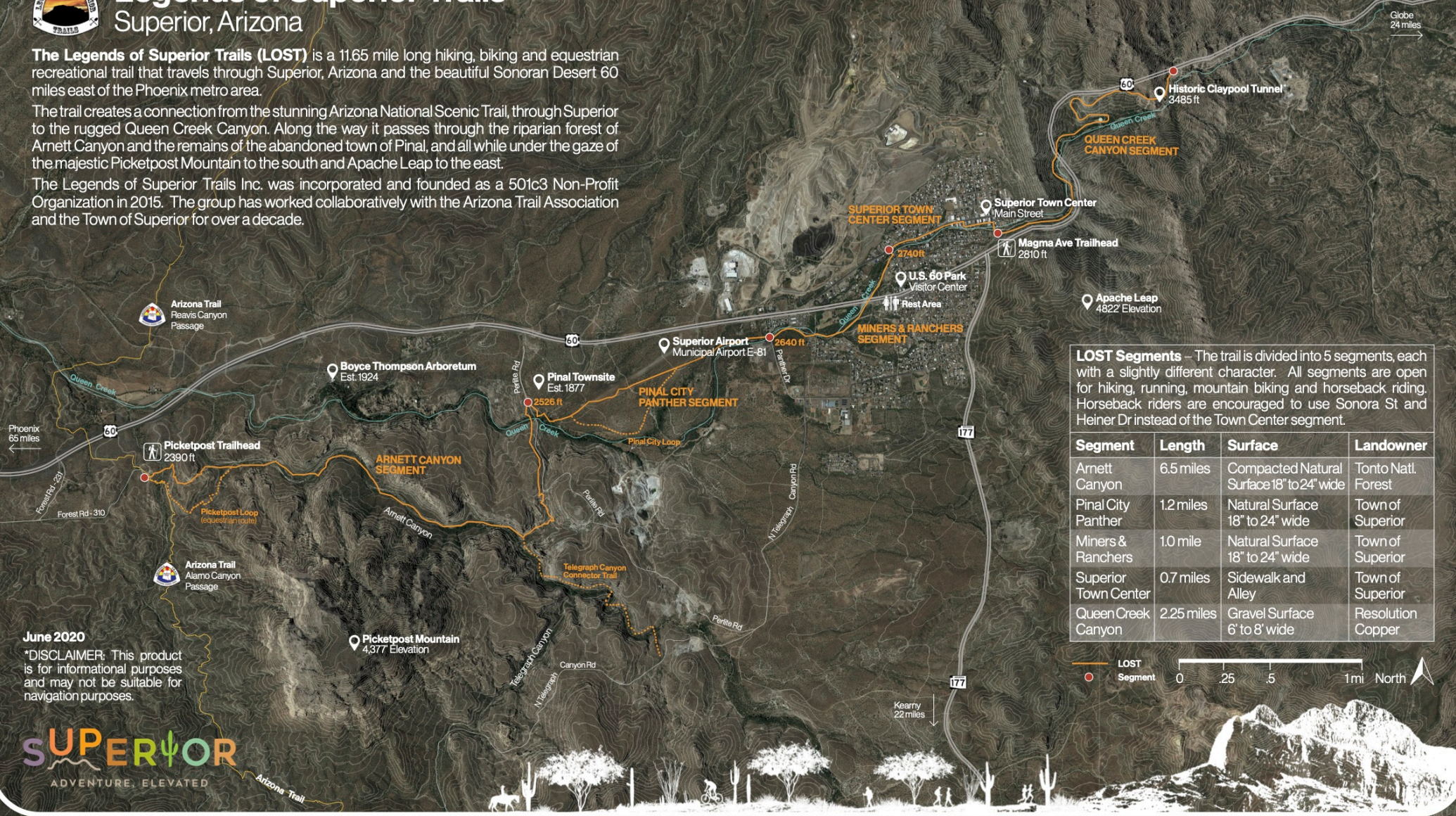
Legends of Superior Trails

Superior, Arizona

The **Legends of Superior Trails (LOST)** is a 11.65 mile long hiking, biking and equestrian recreational trail that travels through Superior, Arizona and the beautiful Sonoran Desert 60 miles east of the Phoenix metro area.

The trail creates a connection from the stunning Arizona National Scenic Trail, through Superior to the rugged Queen Creek Canyon. Along the way it passes through the riparian forest of Arnett Canyon and the remains of the abandoned town of Pinal, and all while under the gaze of the majestic Picketpost Mountain to the south and Apache Leap to the east.

The Legends of Superior Trails Inc. was incorporated and founded as a 501c3 Non-Profit Organization in 2015. The group has worked collaboratively with the Arizona Trail Association and the Town of Superior for over a decade.



LOST Segments – The trail is divided into 5 segments, each with a slightly different character. All segments are open for hiking, running, mountain biking and horseback riding. Horseback riders are encouraged to use Sonora St and Heiner Dr instead of the Town Center segment.

Segment	Length	Surface	Landowner
Arnett Canyon	6.5 miles	Compacted Natural Surface 18" to 24" wide	Tonto Natl. Forest
Pinal City Panther	1.2 miles	Natural Surface 18" to 24" wide	Town of Superior
Miners & Ranchers	1.0 mile	Natural Surface 18" to 24" wide	Town of Superior
Superior Town Center	0.7 miles	Sidewalk and Alley	Town of Superior
Queen Creek Canyon	2.25 miles	Gravel Surface 6" to 8" wide	Resolution Copper

June 2020

*DISCLAIMER: This product is for informational purposes and may not be suitable for navigation purposes.

SUPERIOR
ADVENTURE. ELEVATED

