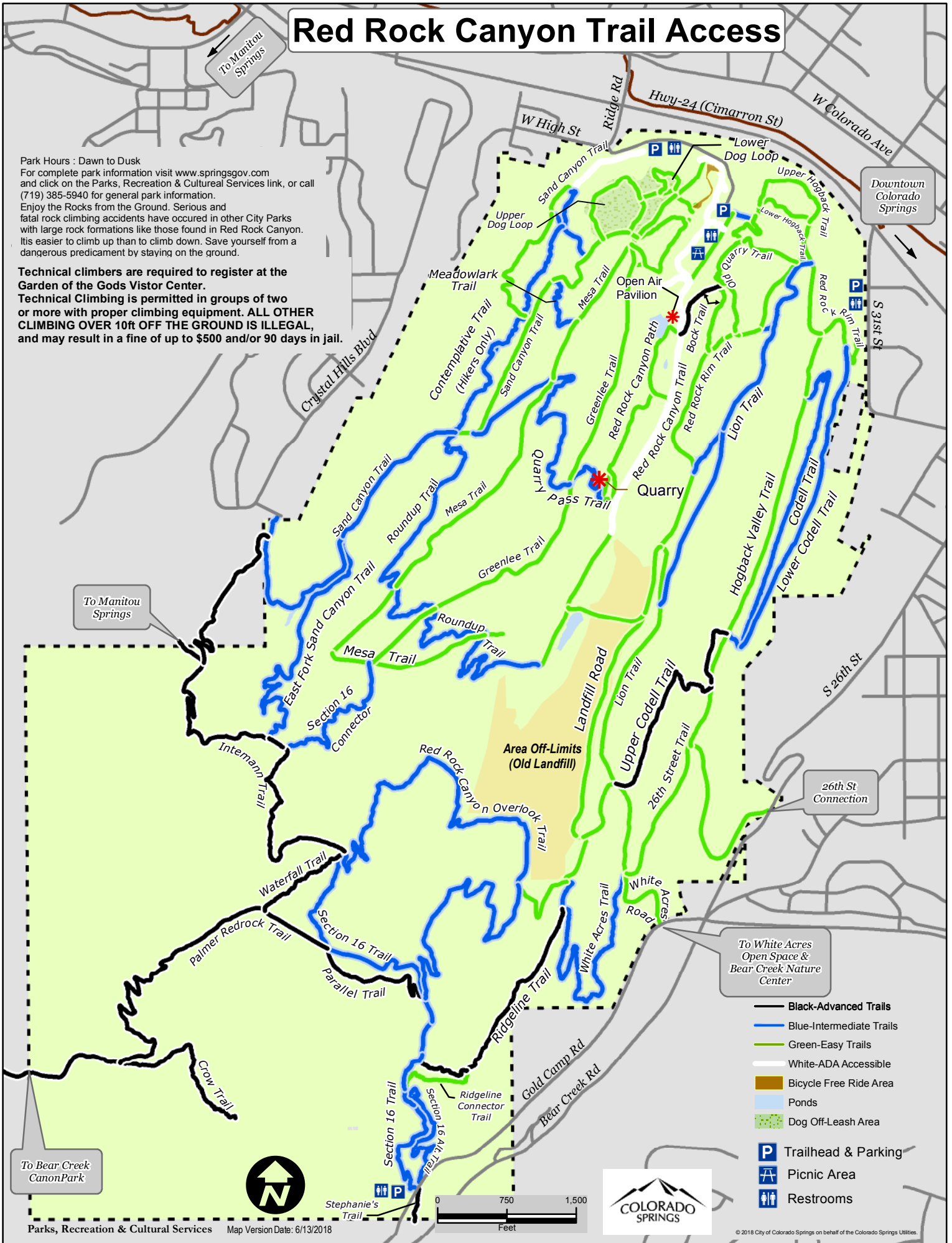


Red Rock Canyon Trail Access

Park Hours : Dawn to Dusk
 For complete park information visit www.springsgov.com and click on the Parks, Recreation & Cultural Services link, or call (719) 385-5940 for general park information.
 Enjoy the Rocks from the Ground. Serious and fatal rock climbing accidents have occurred in other City Parks with large rock formations like those found in Red Rock Canyon. It's easier to climb up than to climb down. Save yourself from a dangerous predicament by staying on the ground.

Technical climbers are required to register at the Garden of the Gods Visitor Center.
Technical Climbing is permitted in groups of two or more with proper climbing equipment. ALL OTHER CLIMBING OVER 10ft OFF THE GROUND IS ILLEGAL, and may result in a fine of up to \$500 and/or 90 days in jail.



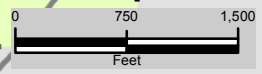
To Manitou Springs

Downtown Colorado Springs

26th St Connection

To White Acres Open Space & Bear Creek Nature Center

To Bear Creek Canon Park



© 2018 City of Colorado Springs on behalf of the Colorado Springs Utilities.