

# Point Au Roche State Park

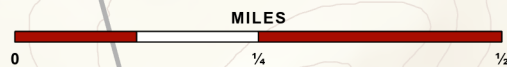
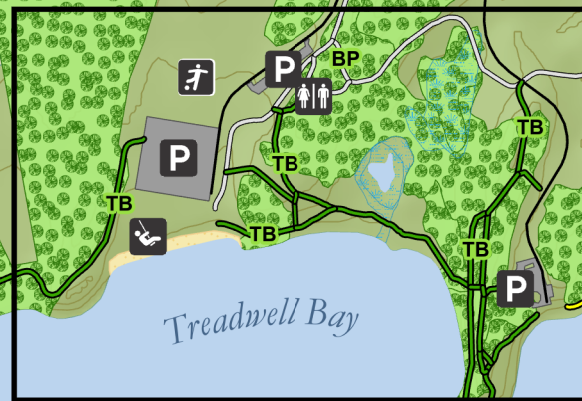
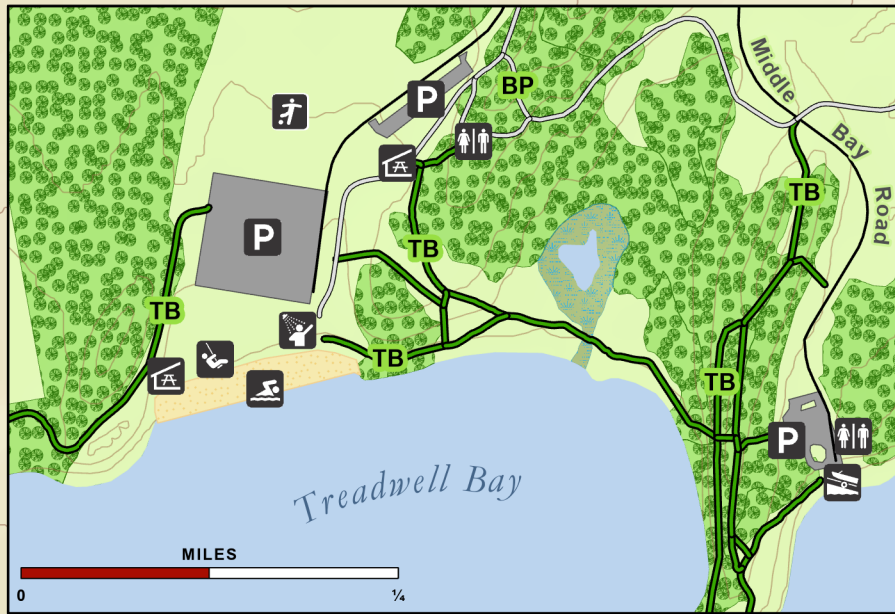
19 Camp Red Cloud Rd, Plattsburgh, NY 12901

## Legend

- |  |                  |  |                                   |
|--|------------------|--|-----------------------------------|
|  | Bathhouse        |  | Playground                        |
|  | Boat Dock        |  | Public Restroom                   |
|  | Boat Launch      |  | Swimming Area                     |
|  | Contact Station  |  | Trail <small>Color Varies</small> |
|  | Lecture Center   |  | State Park                        |
|  | Nature Center    |  | Beach                             |
|  | Park Office      |  | Paved Area                        |
|  | Parking Lot      |  | Shrubland                         |
|  | Picnic Pavillion |  | Wetlands                          |
|  | Playfield        |  | Water                             |

## Trails

- PWM - Philip C. Walker Memorial Trail - 1.6 Miles
- BP - Bike Path - Gray - 1.4 Miles
- CB - Connor Bay - Blue - 2.1 Miles
- LP - Long Point - Orange - 4.1 Miles
- MP - Middle Point - Yellow - 2.1 Miles
- RH - Rams Head - Red - 1.9 Miles
- TB - Treadwell Bay - Green - 2.3 Miles



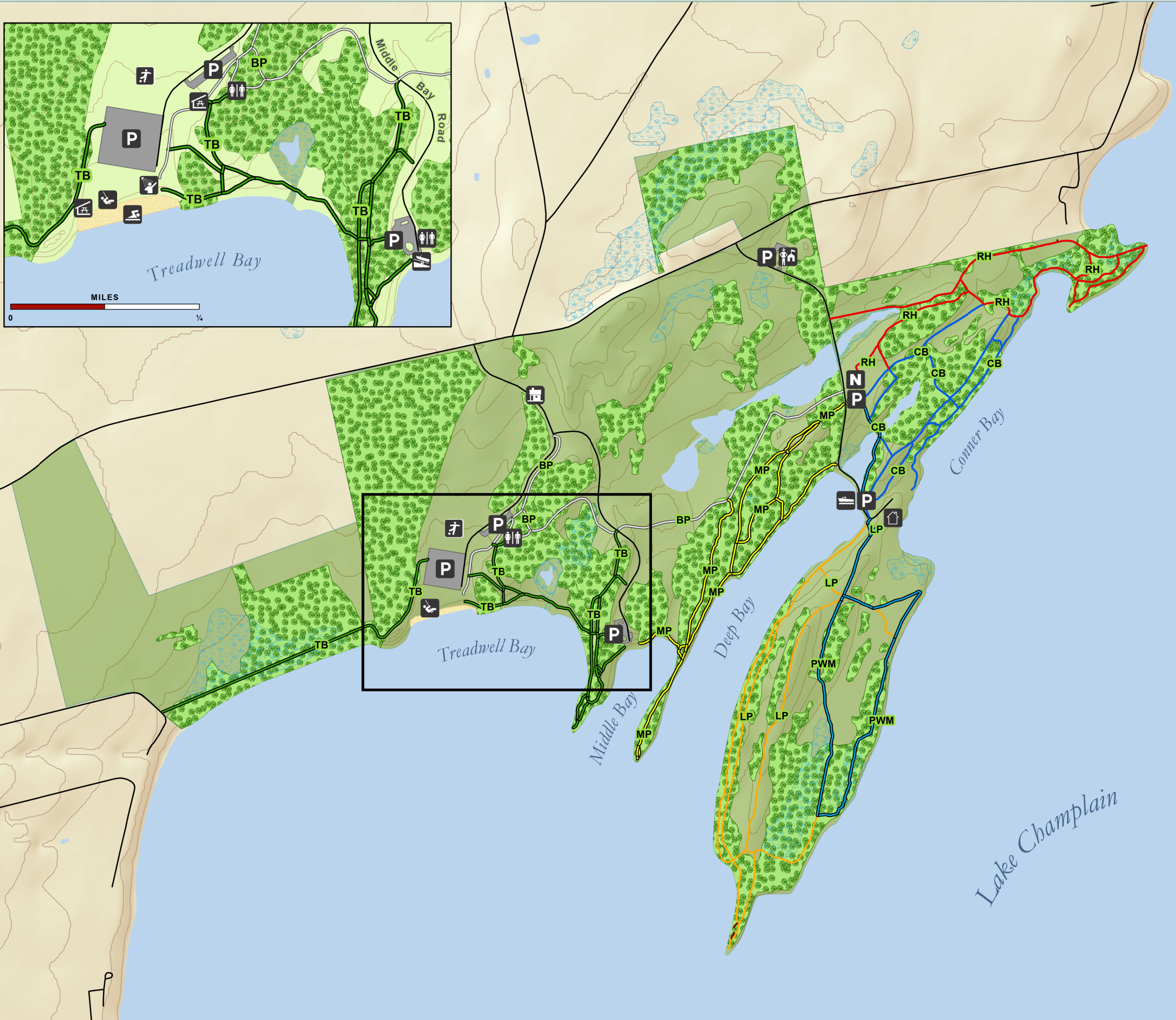
Please be considerate of other park users.  
Please report any accident or incident immediately to park police.  
All boundaries and trails are shown as approximate.  
Be aware of changing trail conditions.

Park Office: (518) 563-0369  
Thousand Island Regional Office: (315) 482-2593  
State Park Police: 1 (877) 851-6086  
In Case of Emergency: 911

Map produced by NYSOPRHP GIS Bureau, July 14, 2023.



New York State  
Parks, Recreation and  
Historic Preservation



Lake Champlain