

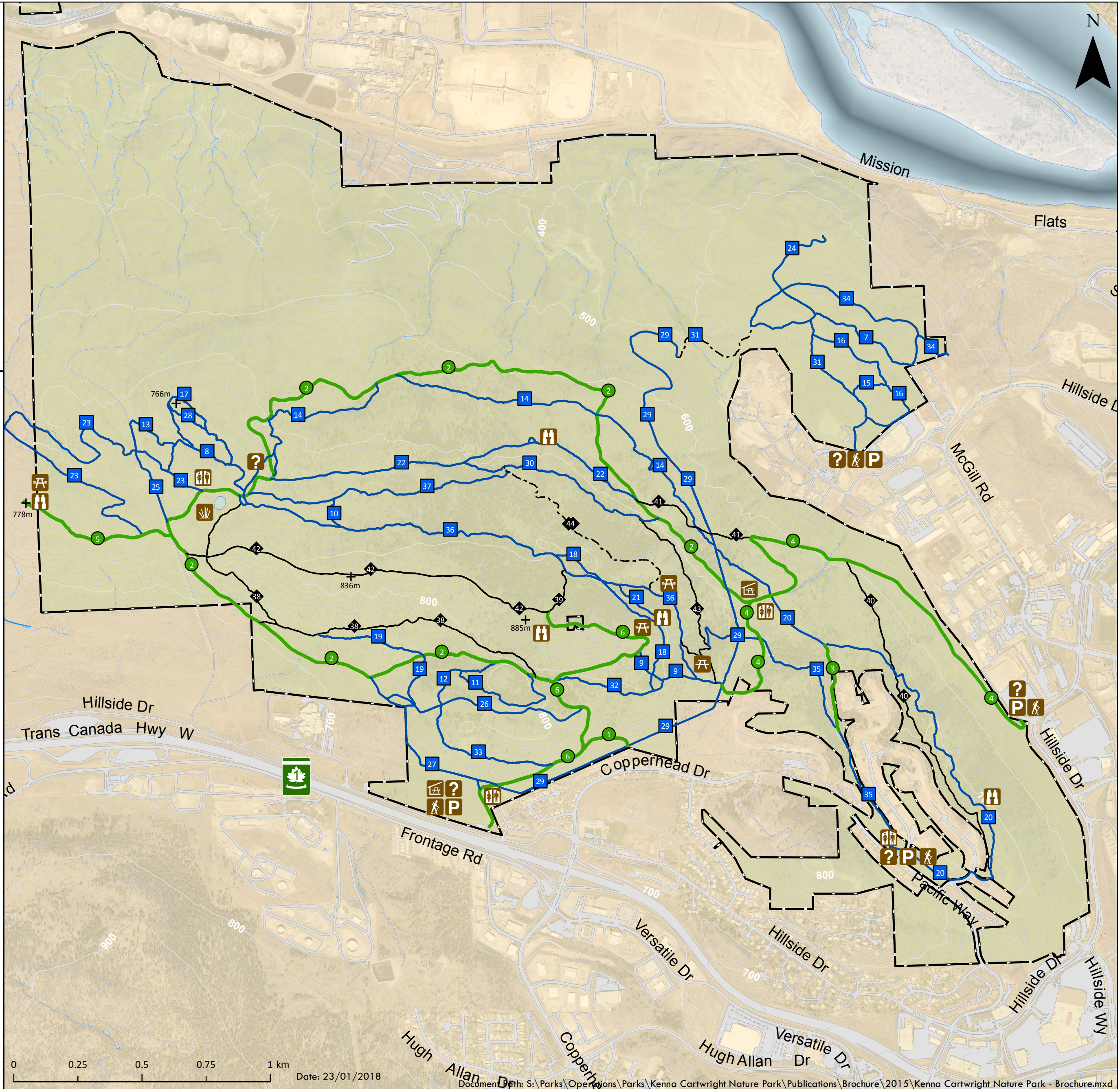


- Trail Head
- Parking
- Washrooms
- Information Kiosk
- Viewpoint
- Picnic Area
- Picnic Shelter
- Wetland
- Park

- Trail Classification**
- Easy
 - More Difficult
 - Very Difficult
 - Extremely Difficult

Trail # Name (km)

- 1 Kestrel (0.2)
- 2 Ponderosa (5.3)
- 3 Red Fox (0.3)
- 4 Reservoir (2.4)
- 5 Sunset (0.6)
- 6 Tower (1.8)
- 7 Arnica (0.6)
- 8 Blowdown Alley (0.2)
- 9 Balsam Root (0.4)
- 10 Beetle Bend (0.3)
- 11 Cabin Fever (0.5)
- 12 Cabin Trail (0.4)
- 13 Cryptogamic (0.2)
- 14 Deer Run (2.7)
- 15 Falcon (0.2)
- 16 Fescue (0.7)
- 17 Lava Flow Lookout (1.0)
- 18 Lichens Traverse (0.8)
- 19 Little Pine (0.7)
- 20 Lower Doc Findlay (2.0)
- 21 Old Man's Beard (0.2)
- 22 Lower Doug Daws (1.6)
- 23 Mesa (2.1)
- 24 Panorama (0.4)
- 25 Pipeline (0.3)
- 26 Powerline (1.0)
- 27 Prickly Pear Cactus (0.7)
- 28 Raven's Roost (0.2)
- 29 Red-Tailed Hawk (2.9)
- 30 Ruffed Grouse (0.9)
- 31 Sage (1.4)
- 32 Saskatoon (0.5)
- 33 Sunnyside (0.6)
- 34 TRU Connector (0.8)
- 35 Upper Doc Findlay (1.0)
- 36 Upper Doug Daws (2.2)
- 37 West Vista (1.1)
- 38 Big Pine (1.9)
- 39 Elevator (0.2)
- 40 Kinnickinnick (0.8)
- 41 Magpie (0.5)
- 42 Ridge (1.5)
- 43 Owl's Perch (0.7)
- 44 North Vista (0.9)



Date: 23/01/2018