



J.W. Corbett Wildlife Management Area

What you can do

Step off the beaten path for a memorable experience at the J. W. Corbett Wildlife Management Area (WMA). Acres of pine flatwoods, cypress swamps and freshwater marshes create a scenic backdrop for a variety of outdoor pursuits. Everyone from hunters to hikers to birders appreciates Corbett's habitats and wildlife. Come, discover and explore!



Planning Your Visit

There is something to do year-round at Corbett WMA, whether hunting for deer in the fall or watching for spring visits of migratory warblers. Find the information you need to plan your trip by visiting MyFWC.com/Recreation. Note that hunts occur on scheduled days, in specific areas. Wear bright orange clothing if you use trails during a hunt. Planning a picnic? Share your snacks with friends, not wildlife – for your safety and theirs. Be sure to pack out food scraps and litter.

Wildlife Viewing

Since Corbett straddles such a variety of upland and wetland habitats, the chances of seeing a wide range of native wildlife species are good. In the pine flatwoods, look for white-tailed deer, as well as eastern bluebirds, kestrels, Bachman's sparrows and federally endangered red-cockaded woodpeckers.

A 3,000-acre sawgrass marsh in the southwestern section of the property is habitat for the endangered snail kite. Snail kites can also be seen from the road as they forage in the marshes between the south entrance and P Camp. Florida sandhill cranes nest on Corbett during fall and winter. Depending on water levels, expect to see a good variety of ibis, egrets, wood storks and herons. Look in the center of depression marshes to see wading bird rookeries (nesting sites) in April and May.

Perhaps the best place to begin your explorations in search of Corbett's wildlife at any time of year is the Hungryland Boardwalk and Trail. The 1.2-mile trail has interpretive signs describing the plant and animal communities. Look for white-tailed deer and bobcats in early morning and late afternoon.

Pileated woodpeckers and barred and screech owls forage in the cypress domes. River otters and raccoons are sometimes seen near the boardwalk. Look for herons, egrets and common yellowthroats in the marshes. Listen for red-shouldered hawks. Check the oak hammocks and cypress swamps for large numbers of migratory warblers in the spring and fall.

Bicycling and Horseback Riding

Miles of roads and trails are open for pleasant bicycling and horseback riding. Bicycles and horses are not permitted on the Hungryland Boardwalk and Trail. Parking for trailers is available at the south check station entrance and at campsites A, B, H, I, K and N. Water is not available.



Fishing

Anglers fish for bass in Corbett's sawgrass marshes during periods of ample rainfall. Semi-circular ponds have been constructed at camps A, B, G, H, I and K where you can catch bluegill, redear, bass, catfish, warmouth, spotted sunfish and gar.

Hiking

On the Hungryland Boardwalk and Trail you can explore a cypress swamp, slash pine flatwoods, sawgrass wetlands and a hardwood hammock. Numerous bromeliads are visible along the boardwalk. This trail is well-removed from hunting zones and is open year-round.

The Ocean to Lake Trail traverses the area west from Corbett's south entrance, 17 miles to Dupuis Reserve. This multi-use trail is closed to vehicles. The blue-blazed trail from the Hungryland Boardwalk parking lot intersects with the Ocean to Lake Trail.



Camping

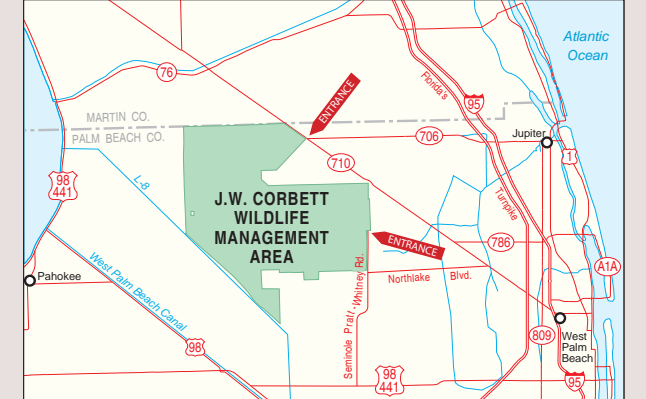
Camping is permitted on designated campsites, seven days a week, beginning with archery season through general gun season, but only on weekends the rest of the year. Campsites are available on a first-come, first-served basis. During archery season, camping areas L and M and half of B are designated for short-term camping of three days or less. Two primitive campsites for hikers on the Ocean to Lake Trail are located at six and twelve miles.



Hunting

Corbett is one of the only public hunting areas along the highly populated Gold Coast. As a result, hunting is very popular. One hundred seventy acres of old tomato fields are planted with food crops for deer, turkey and doves. This area can be accessed from Tomato Field Grade with a 2-wheel-drive vehicle.

During general gun season, about 85 percent of Corbett is open to dog hunting and swamp buggies. The property also has two still-hunt-only areas, where vehicles are not allowed. Drive with extreme caution, and be particularly watchful for slow-moving swamp buggies.



How to get to J.W. Corbett Wildlife Management Area

Use the south entrance to visit Hungryland Boardwalk; travel 13 miles west of I-95 (West Palm Beach) on Northlake Boulevard. Turn right when Northlake dead ends at Seminole Pratt Whitney Road; entrance is on the left, 3 miles north. The north entrance is on SR 710, 25 miles northwest of West Palm Beach. Turn left into Corbett at the junction of CR 706.

What it costs to visit

An entrance fee is required. No fee required for Florida Trail through-hikers. Visit MyFWC.com/Recreation for details.

Need a hunting or fishing license?

To hunt or fish you must possess the appropriate licenses and permits. Toll-free at (888) HUNT-FLORIDA (486-8356) or (888) FISH-FLORIDA (347-4356), or go to MyFWC.com/License

Area lodging, camping and restaurants

Discover the Palm Beaches (800) 554-7256 palmbeachfl.com

Want to know more?

MyFWC.com/Recreation

Recreation Guide

Your guide to hunting, fishing and wildlife viewing



Florida Fish and Wildlife Conservation Commission
MyFWC.com



J.W. Corbett Wildlife Management Area

Wedged between Florida's expanding Gold Coast to the east and south, and orange groves and agricultural fields to the west, the 60,228-acre J.W. Corbett Wildlife Management Area (WMA) protects a large, key tract of habitat. Here is an important refuge for native wildlife and a recreational paradise for outdoor lovers of all persuasions.

When you visit, you can explore pine flatwoods, cypress swamps and a hardwood hammock on the Hungryland Boardwalk and Trail. You'll also find ample opportunity for hunting, birding, fishing, biking, horseback riding and hiking.

Nearby is the Everglades Youth Conservation Camp, offering summer camps for kids and year-round programs for families and educators. For details: fyccn.com/EYCC

Thousands of years on this land

Native peoples inhabited this land for at least 2,000 years before Europeans arrived. They hunted and fished, built mounds to bury their dead, accumulated the remains of their meals in middens and traveled by canoe in canals they dug to ease travel through the sawgrass marsh. Two significant archaeological sites have been found on Corbett: Big Mound City and Big Gopher.

Following European settlement, most Florida Indians died of disease and in local wars. Many survivors were enslaved, others escaped from the Europeans, some settled in Spanish mission villages. Indian bands migrated from Georgia and Alabama territories into Florida. A British official referred to them as *cimarrón*, a term that evolved into *Seminole*. After Spain ceded Florida to the United States, the U.S. Army destroyed Indian villages and crops, starving them out. Seminoles and former African slaves fled south into present-day J.W. Corbett WMA. Some of these hungry, displaced Seminoles hid from the military in the sawgrass marshes of Corbett's "Hungryland Slough," where locals claimed the land's too poor to grow food.



Florida State Archives

In the last century, Corbett's working landscape was thoroughly logged and grazed by its owners. Nothing, however, has impacted its native communities and wildlife as much as the massive draining and reshaping of the historical Everglades (of which Corbett is but a small piece).

In 1947, the Florida Game and Fresh Water Fish Commission, predecessor of the Florida Fish and Wildlife Conservation Commission (FWC), purchased approximately 52,000 acres from the Southern States Land and Timber Company. Nearly 8,000 acres have been added since. Today FWC is managing this land to ensure healthy habitat for a wide variety of aquatic and upland wildlife species, and to provide a good selection of nature-based recreational opportunities.

The forces that shape this landscape



Restoring the natural flow

Corbett is embedded within a larger ecosystem, the Loxahatchee watershed, and includes a portion of the northern Everglades. Much of the land, however, has been artificially impounded and adversely flooded.

In the 1960s, federal and state agencies surrounded Corbett with 23 miles of canals. This was done to "dry out" and control flooding on lands to the east to facilitate human development. Waters that once

flowed west into the Everglades and east into Loxahatchee Slough were redirected. As a result, the hydroperiod (how long water stands on the land) is now longer, disrupting the delicately timed life cycles of many species, from tadpoles to wood storks.

FWC's management goal is to mimic the way water used to flow in a sheet across the land, and to improve wildlife and fish habitat on the J.W. Corbett Wildlife Management Area.



Nature needs fire

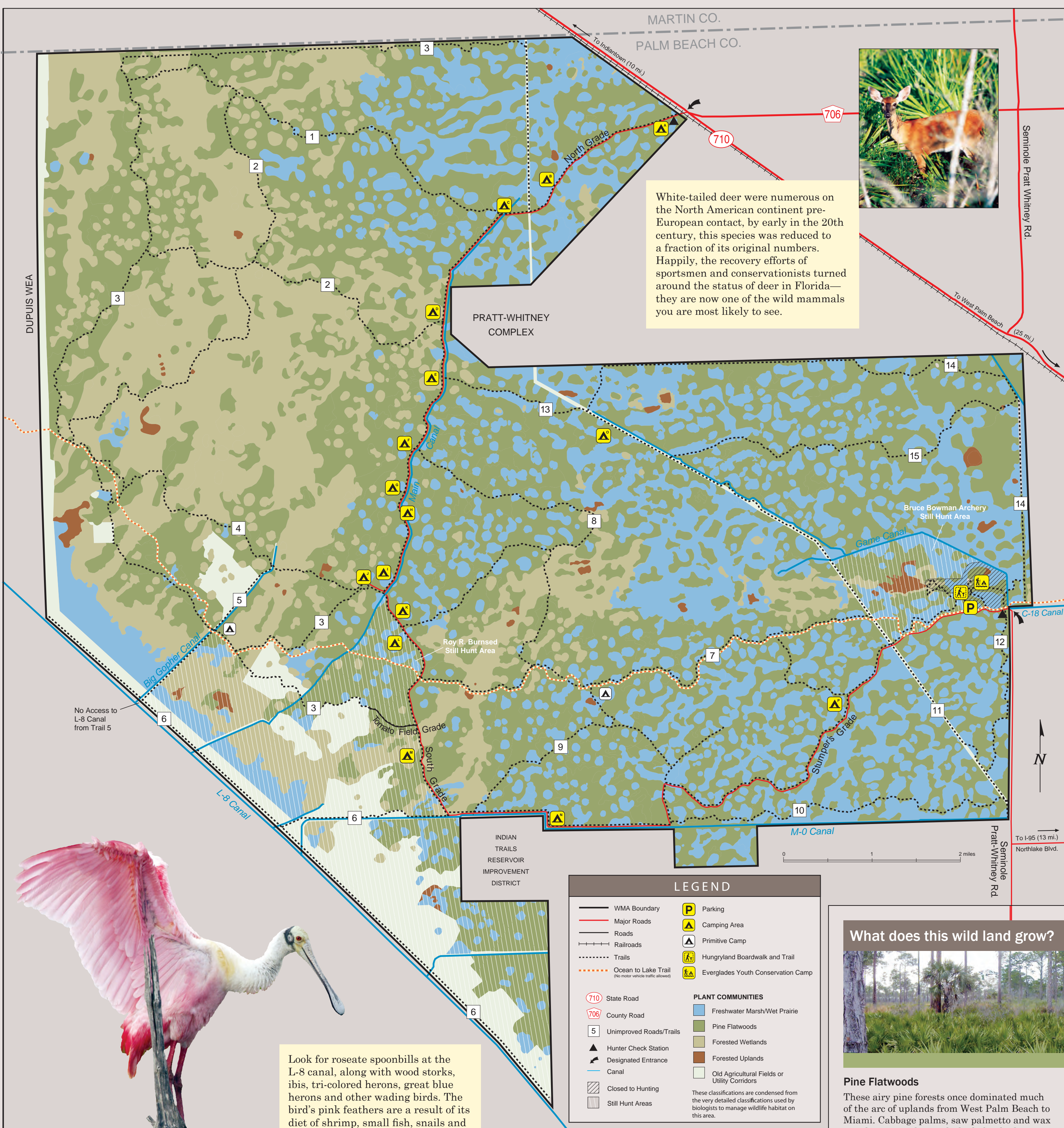
Florida's upland and wetland habitats have been shaped for thousands of years by lightning-ignited fires. Developments and roads now interrupt this natural fire cycle, so land managers must introduce prescribed fires to keep natural forests healthy.

In the absence of fire, shrubs and small trees choke out native grasses and wildflowers on the forest floor. The habitat becomes unsuitable for animals like gopher tortoises, red-cockaded woodpeckers and turkeys.

Today, land managers use prescribed fires to remove underbrush that builds up where fires have been excluded. These slow-moving controlled burns help prevent destructive wildfires. They add nutrients to the soil and stimulate seed production. The newly burned groundcover is renewed and the young, tender growth attracts wildlife.



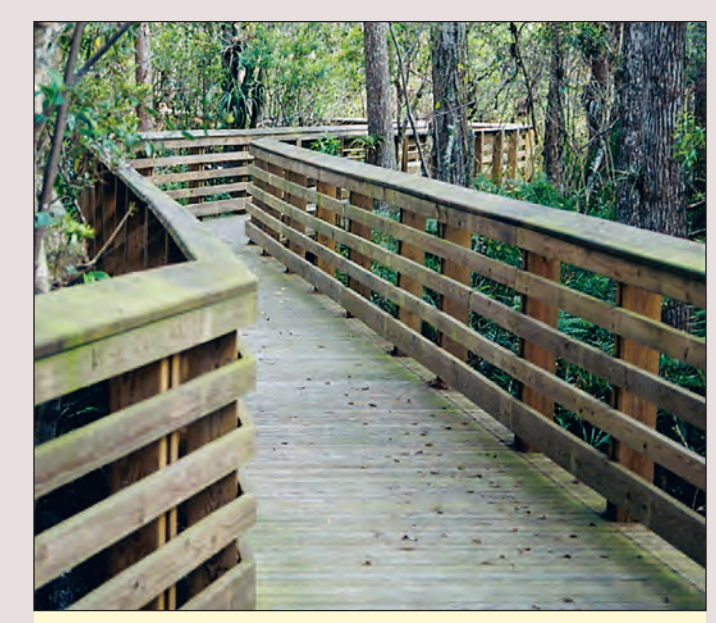
J.W. Corbett Wildlife Management Area



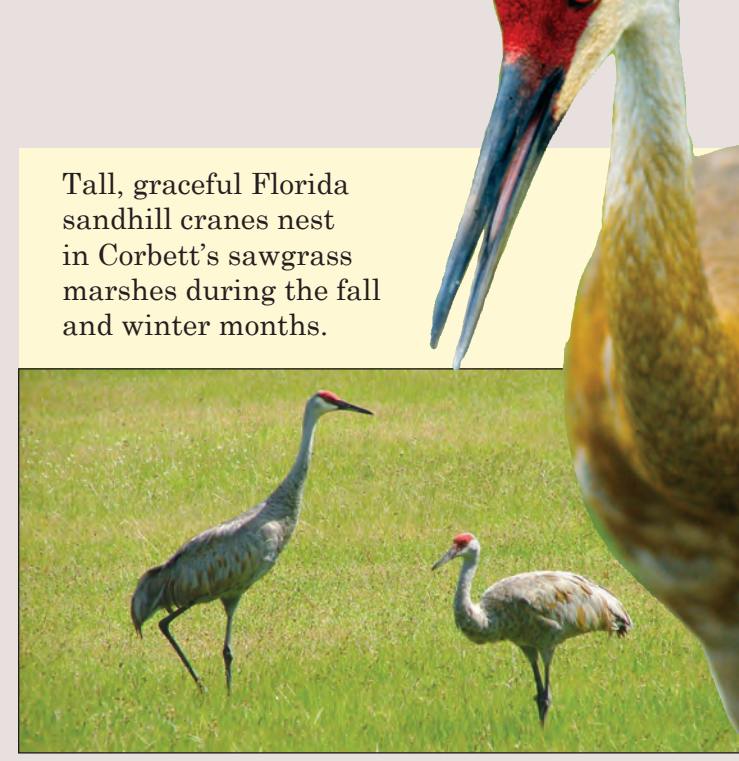
White-tailed deer were numerous on the North American continent pre-European contact, by early in the 20th century, this species was reduced to a fraction of its original numbers. Happily, the recovery efforts of sportsmen and conservationists turned around the status of deer in Florida—they are now one of the wild mammals you are most likely to see.



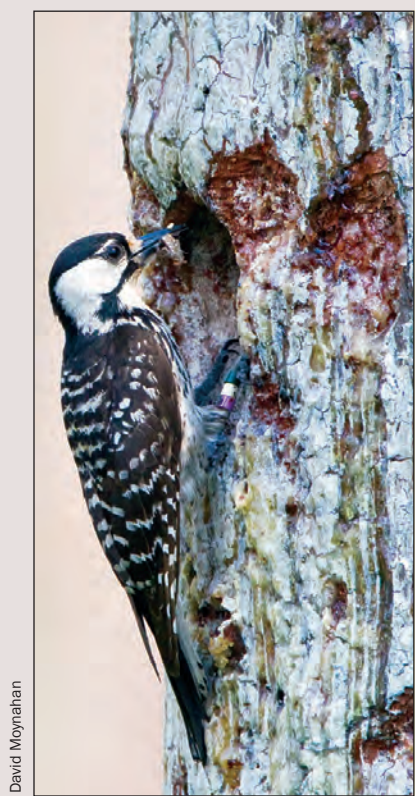
Look for roseate spoonbills at the L-8 canal, along with wood storks, ibis, tri-colored herons, great blue herons and other wading birds. The bird's pink feathers are a result of its diet of shrimp, small fish, snails and aquatic insects.



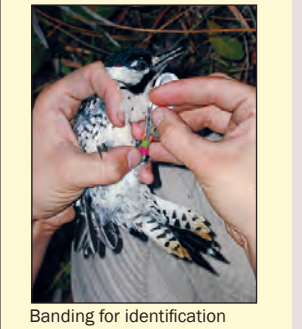
The Hungryland Boardwalk and Trail winds through a variety of habitats including majestic cypress adorned with bromeliads.



Tall, graceful Florida sandhill cranes nest in Corbett's sawgrass marshes during the fall and winter months.



Trees throughout the pine flatwoods are home to the red-cockaded woodpecker, an imperiled species. Management activities sustain the southernmost population of this species on the east coast.



Managers remove invasive nonnative plants that crowd out native species.



In February, you won't be able to miss the soundtrack of acrobatic pairs of red-shouldered hawks circling above their territories, incessantly crying "kee-yar... kee-yar." These are among Florida's most abundant breeding hawks.



During the summer months, children ages 8 through 14 are invited to enjoy a back-to-nature experience here on Corbett at the Everglades Youth Conservation Camp (fycen.com/EYCC).

Pick up a checklist at the entrance kiosk to track your sightings of the abundant birdlife at Corbett, a site on the Great Florida Birding and Wildlife Trail (floridabirdingtrail.com).

What does this wild land grow?



Pine Flatwoods
These airy pine forests once dominated much of the arc of uplands from West Palm Beach to Miami. Cabbage palms, saw palmetto and wax myrtle grow underneath the light shade.

Freshwater Marsh/Wet Prairie
This plant community supports a variety of water-loving species, including sawgrass, maidencane, St. John's wort, pickerelweed and a number of rushes.

Forested Uplands
Here and there grow woody stands of cabbage palms, oaks, bay, pond apple, strangler fig and maple trees—a blend of temperate and tropical species. Airplants, ferns and orchids adorn the trunks, and tropical stoppers, wild lime and wild coffee fill in the understory.

Forested Wetlands
Bald cypress trees dominate this plant community, mixed with willow and wax myrtle. Airplants and orchids are commonly found here.